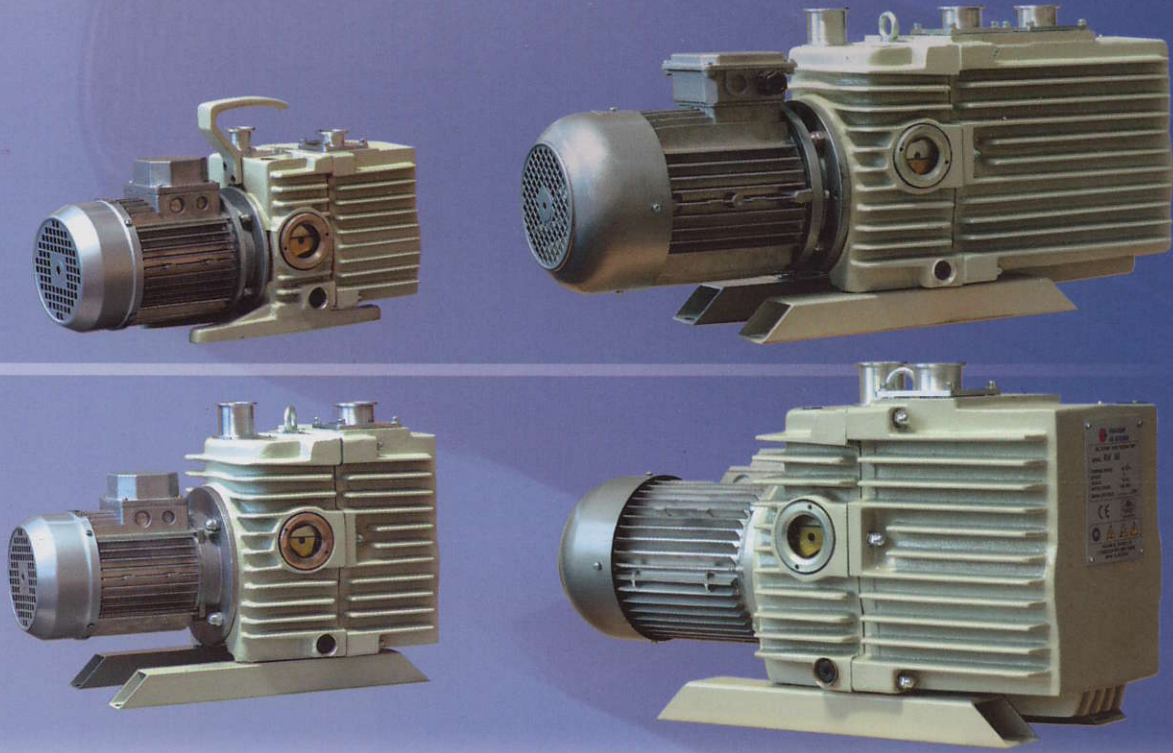


OIL ROTARY VANE

R
O
U
G
H
V
A
C
U
U
M



SPECIFICATIONS

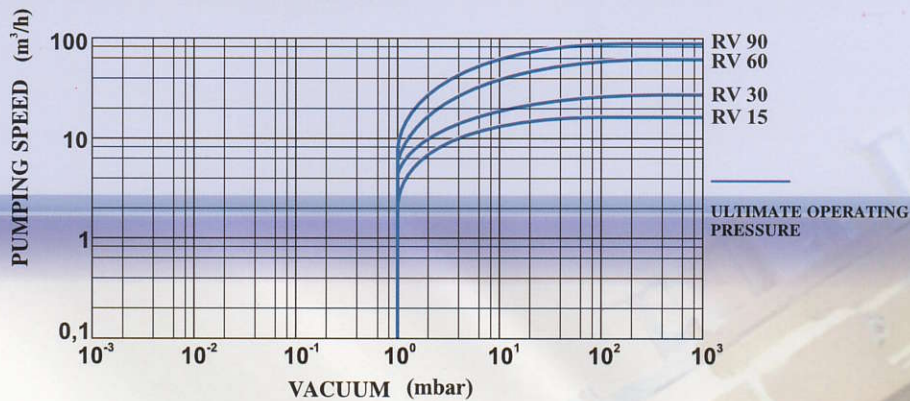
Description	Measure	Model			
		RV 15	RV 30	RV 60	RV 90
Free Air Pumping *	m ³ /h	19	38	76	114
Pumping Speed **	m ³ /h	15	30	60	90
Ultimate operational pressure ***	mbar	1	1	1	1
Incoming voltage (50Hz)		220V 1-PH 220V/380V 3-PH	220V/380V 3-PH	220V/380V 3-PH	220V/380V 3-PH
Electric motor power	kW	0,55	1,1	2,2	3,2
Nominal speed, prm	min ⁻¹	1380	1380	1400	1420
Noise level	dB(A)	58	60	66	68
Quantity of oil	l		2	2,8	4,1
Recommended oil		V9930	V9930	V9930	V9930
Tolerance of ambient temperature	°C	12~40	12~40	12~40	12~40
Input / Output type		NW 25/ NW 25	NW 40/ NW 40	NW 40/ NW 40	NW 50/ NW 40
Dimensions	mm	460(L) x 172(W) x 290(H)	510(L) x 242(W) x 365(H)	615(L) x 242(W) x 365(H)	755(L) x 242(W) x 450(H)
Weight	kg	26	65	70	98

* Theoretical pumping speed.

** Pumping speed in working media, measured at specific laboratory conditions gas, pressure, temperature, etc. This speed is variable, depending on the real operation process.

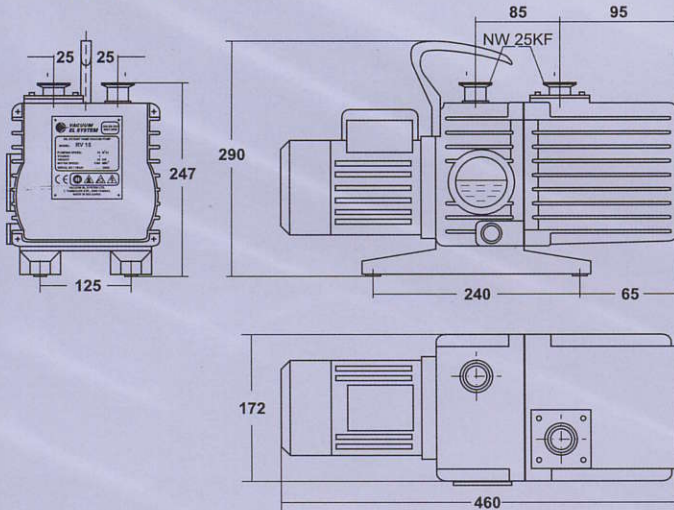
*** Operational pressure values, obtainable in real conditions, in accordance with the pump operation instructions.

All measurements of vacuum pumps parameters are done in compliance with the factory instructions.

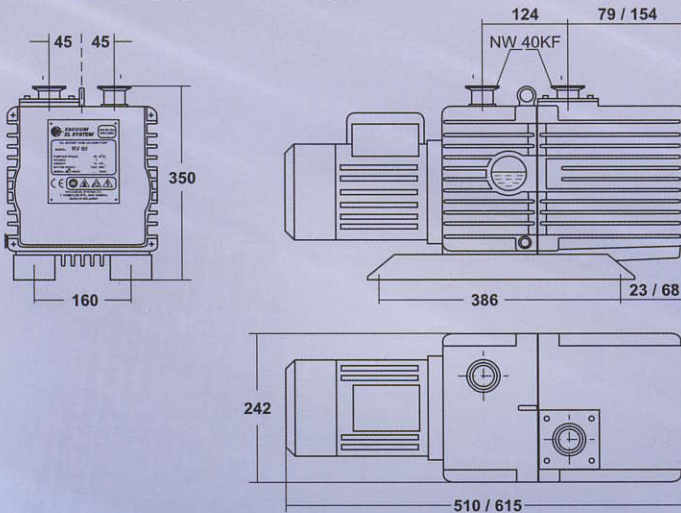


VACUUM PUMPS

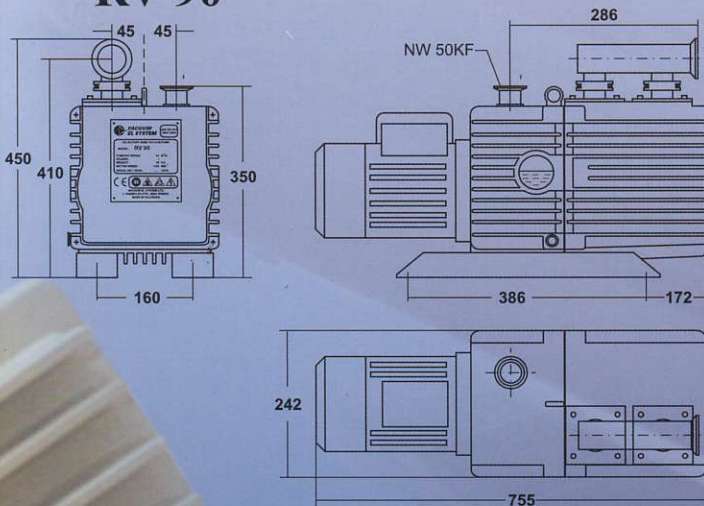
RV 15



RV 30 / RV 60



RV 90



APPLICATIONS

- Vacuum packing
- Vacuum forming
- Filtering
- Transportation
- Medical equipment
- Food processing industry

BENEFITS

- Robust and highly reliable
- Long service period
- Very low oil mist at the pump exhaust line
- Designed for continuous operation
- Easy maintenance
- Two-year guarantee period
- Very good performance at an attractive price

FEATURES

- One-stage compact design
- One or three phase motor, 220/380 VAC
- Low noise and vibration level
- Standard inlet/outlet connection NW
- Handle or hook for easy moving
- Coalescence with foreline traps and exhaust filters if necessary
- Large oil tank
- Surface air-cooling
- Ideally suited for roughing vacuum